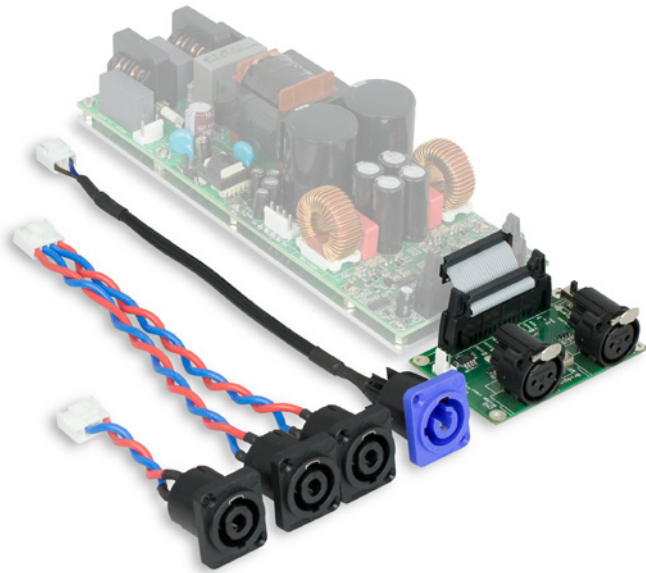


S-PRO Series Evalkit Accessories

Evaluation Kit Accessories for S-PRO Series amplifier module



Evaluation Kit Accessories for S-PRO2 only



Evaluation Kit Accessories for S-PRO2 and S-A1/2

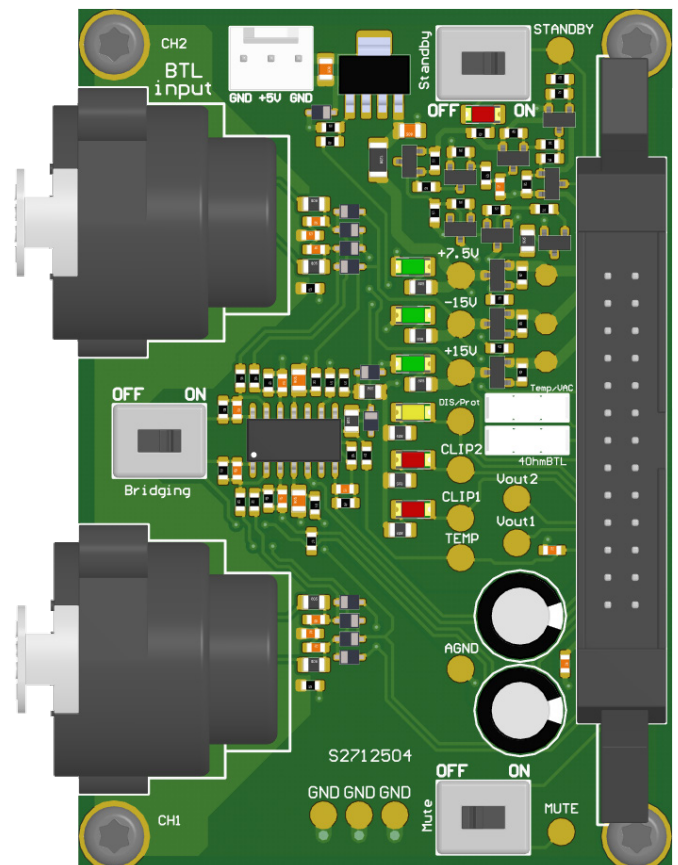
The S-PRO Series Evaluation Kit Accessories comprises I/O-board, connection cables and documentation for easy performance evaluation and subsequent design-in purposes with S-PRO Series amplifier module.

Easy Evaluation & Listening Test

The Evaluation Kit Accessories allows you to setup a listening test on Pascal S-PRO Series amplifier modules in a few minutes. Only additional requirements are standard PowerCon, Speakon, XLR-cables and an external DSP-controller to set cross-overs and equalization.

Easy Prototyping & Implementation

An application guide is included with the Evaluation Kit Accessories which shows how to implement the S-PRO Series modules as well as a fast prototyping guide. The I/O board can be used for first prototyping as its size matches the width and height of the amplifier modules.



The enclosed I/O-board provide easy connection of input signals, LED status indicators, control switches for relevant functions as well as PCB measurements points.