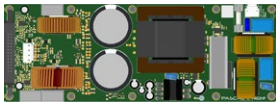
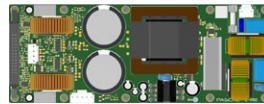


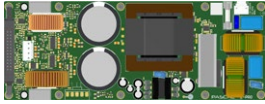
# L-PRO2 Series Amplifier Module



**L-PRO2HP**  
2500 W + 800 W



**L-PRO2S**  
800 W + 800 W (SE)  
2500 W RMS (BTL)



**L-PRO2**  
1200 W + 400 W



Pascal L-PRO2 Series – an ultra-compact power platform, for 2-way applications and subwoofers, featuring extreme dynamic power ratings and integrated power supply with PFC.



## Ultra High Power and Self-Protected

The L-PRO2 series feature high power levels for speaker system requiring very high SPL. Moreover the L-PRO2 series is equipped with protection features making them fully self-protected and designed after and audio-at-all-times principle.



## Unmatched Efficiency

Like the S, T & U-PRO Series, the L-PRO Series boasts the world's best system efficiency, minimizing the requirement for heat sinks and cooling. The cool operation also contributes to the amplifiers' long term reliability.



## Dedicated for Speakers & Subwoofers

The L-PRO2 and L-PRO2HP asymmetrical power configuration, feature set, and form factor uniquely optimize it as a dedicated power solution for self-powered 2-way loudspeakers. The symmetrical output channels of the L-PRO2S makes it convenient for self-powered subwoofers.



## Auxiliary Power & Readouts

Auxiliary power is available for DSP or analog I/O cards. Readouts of protect/mute, temperature and clip signals are accessible for DSP/Network or IO-boards. The L-PRO2 Series features ultra low standby power consumption for EuP2013 and green energy star compliance, with an Auto Standby/Wake-up feature with selectable time settings.



## Audiophile Performance

Pascal's proprietary UMAC™ Class-D technology delivers unequalled audiophile specifications, including the highest dynamic range and the lowest distortion performance of any comparable pro audio amplifier. This makes the L-PRO2 series suitable for pro audio applications and for use in high-end Hi-Fi and AV products.



## Interface compatible with S/T/U-PRO

The L-PRO Series features compatible pin interfacing and identical output voltages to the higher current capable, popular S, T and U-PRO modules; thus the front-end electronics of both the S, T, U and L-PRO Series are plug-and-play compatible.



## Universal Mains & PFC

Pascal's URECTM PFC (Power Factor Correction) power supply technology enables universal AC mains operation, eliminating the need for local market specific power regulation products and susceptibility to related reliability issues. The power supply delivers consistent, regulated power worldwide.



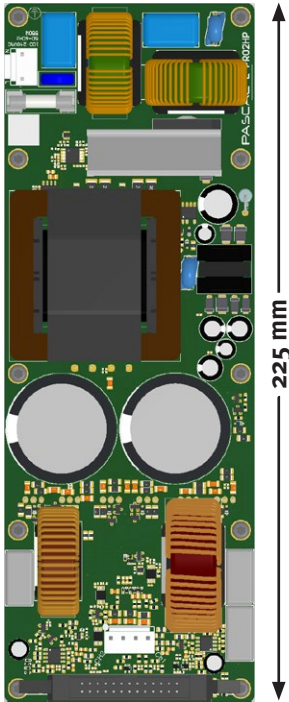
## Safety Approved - EMC Compliant

Pascal amplifier modules are safety approved and verified for EMC compliance. CB report and UL certificates are available for easy market approval.

# Specifications:

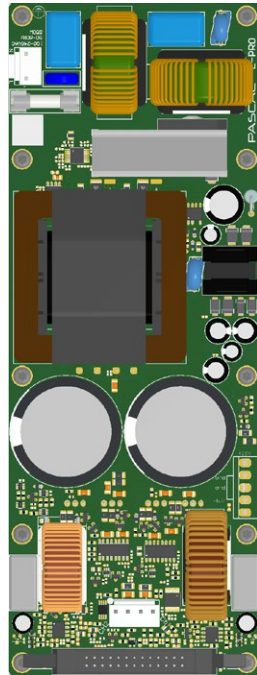
## L-PRO2HP

2 channels (2500 W\* + 800 W)



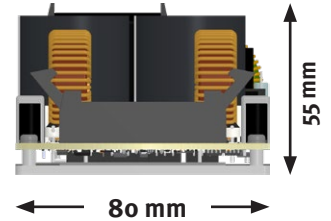
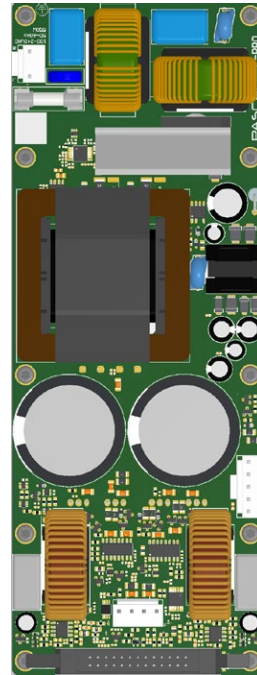
## L-PRO2

2 channels (1200 W + 400 W)



## L-PRO2S

BTL mode (2500 W\*)



### Power Ratings (1% THD @ 120V<sub>AC</sub> and 230V<sub>AC</sub>)

		16 Ω	8 Ω	4 Ω	2.7 Ω
L-PRO2HP	Output power channel 1	800 W	1500 W	2500 W*	N/A
	Output power channel 2	200 W	400 W	800 W	N/A
L-PRO2	Output power channel 1	200 W	400 W	800 W	1200 W
	Output power channel 2	200 W	400 W	400 W	N/A
L-PRO2S	Output power channel 1	200 W	400 W	800 W	1200 W
	Output power channel 2	200 W	400 W	800 W	1200 W
	Output power BTL mode	800 W	1500 W	2500 W*	N/A

\* Dynamic headroom power

<b>Output Circuitry</b>	UMAC™ Class D - full bandwidth PWM modulator with ultra low distortion
<b>Output Voltage</b>	85 V <sub>p</sub> / 170 V <sub>pp</sub> (unloaded)
<b>Amplifier Gain</b>	28.2 dB
<b>Signal To Noise-Ratio</b>	> 119 dB (A-weighted, 20 Hz - 20 kHz, 8 Ω load)
<b>THD+N (typical)</b>	< 0.05 % (20 Hz - 20 kHz, 8 Ω load, 3 dB below rated power)
<b>Frequency Response</b>	20 Hz - 20 kHz (+0/-0.25 dB (8 Ω load, 3 dB below rated power)
<b>Damping Factor</b>	> 350, channel 1 / > 225, channel 2 (8 Ω load, 1 kHz and below)
<b>Protection Circuits</b>	Short circuit protection, DC protection, under voltage protection, temperature protection, overload protection
<b>Readouts &amp; Control options</b>	Protect/Disable (mute), Temperature, Clip, Voltage, Auto Standby/Wake-up (3 timings)
<b>Power Supply</b>	URECT™ universal mains switch mode power supply with Power Factor Correction (PFC) and integral standby converter
<b>Operation Voltage</b>	Universal Mains, 85-265V
<b>SMPS RMS power limit</b>	L-PRO2HP and L-PRO2S: 1500 W (230V <sub>AC</sub> / 120V <sub>AC</sub> ) 1200 W (100V <sub>AC</sub> ) / L-PRO2: 1200 W (230V <sub>AC</sub> / 120V <sub>AC</sub> / 100V <sub>AC</sub> )
<b>Aux. Power for DSP</b>	±15 V, +7.5 V, maximum total watt available: (L-PRO2HP: 7.5 W), (L-PRO2: 8.3 W), (L-PRO2S: 8.3 W)
<b>Standby Consumption</b>	< 0.25 W (Green Energy Star & ErP 1275/2008/EC compliant)
<b>Dimensions</b>	L-PRO2HP: 55 x 80 x TBD / L-PRO2 & L-PRO2S: 55 x 80 x 215 mm
<b>Weight</b>	L-PRO2HP: 1025 g (lbs) / L-PRO2: 950 g (2.09 lbs) / L-PRO2S: 970 g (2.14 lbs)

All specifications are typical values