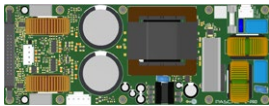
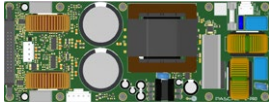


L-PRO2S Series 100/70V Line Amplifier Modules



L-PRO2S
800 + 800 W Lo-Z
1500 W Hi-Z direct drive



L-PRO2S + L-A2
800 + 800 + 800 + 800 W Lo-Z
1500 + 1500 W Hi-Z direct drive

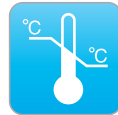


Pascal L-PRO2S Series – an ultra-compact power platform for 100/70V line applications, featuring direct drive, energy star compliance and integrated power supply with PFC.

100/70V

Dedicated for 100/70V line amplifiers

The L-PRO2S Series is optimized for the specific requirements for 100/70V line applications. This is evident in the high voltage rails providing direct drive. Energy Star compliance compulsory in many tenders. Extensive protection scheme to protect against fault scenarios during system installation.



Unmatched Efficiency

Like the S, T and U-PRO Series, the L-PRO2S Series boasts the world's best system efficiency, minimizing the requirement for heat sinks and cooling. The cool operation also contributes to the amplifiers' long term reliability.



2RU rack installation

The minimal physical dimensions of the L-PRO2S module gives a dedicated 100/70V line amplifier solution with integrated power supply and direct drive capability that fits into a 2RU rack. Combined with the L-A2 module, it is possible to design multi-channel 100/70V systems with small external dimensions.



Auxiliary Power & Readouts

Auxiliary power is available for DSP or analog I/O cards. Readouts of protect/mute, temperature and clip signals are accessible for DSP/Network or IO-boards. The L-PRO2S Series features ultra low standby power consumption for EuP2013 and green energy star compliance, with an Auto Standby/Wake-up feature with selectable time settings.



Audiophile Performance

Pascal's proprietary UMAC™ Class-D technology delivers unequalled audiophile specifications, including the highest dynamic range and the lowest distortion performance of any comparable pro audio amplifier. This makes the L-PRO2S Series suitable for pro audio applications and for use in high-end Hi-Fi and AV products.



Interface compatible with S/T/U-PRO2

The L-PRO2S Series features compatible pin interfacing and identical output voltages to the higher current capable, popular S, T and U-PRO modules; thus the front-end electronics of both the S, T, U and L-PRO2S Series are plug-and-play compatible.



Universal Mains & PFC

Pascal's UREC™ PFC (Power Factor Correction) power supply technology enables universal AC mains operation, eliminating the need for local market specific power regulation products and susceptibility to related reliability issues. The power supply delivers consistent, regulated power worldwide.

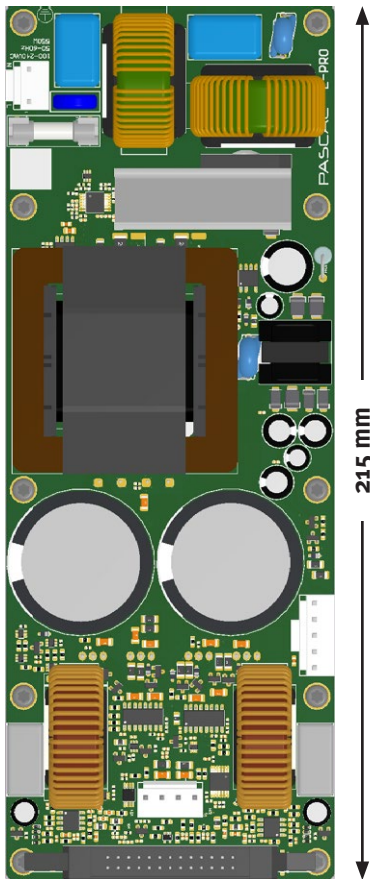


Safety Approved - EMC Compliant

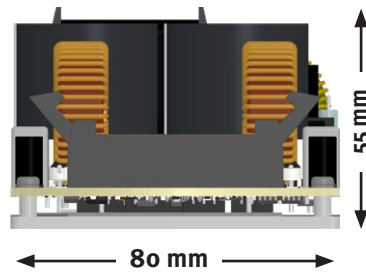
Pascal amplifier modules are safety approved and verified for EMC compliance. CB report and UL certificates are available for easy market approval.

Specifications:

L-PRO2S



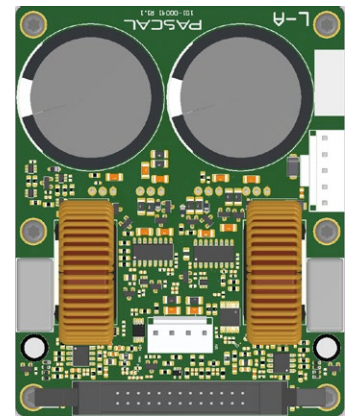
215 mm



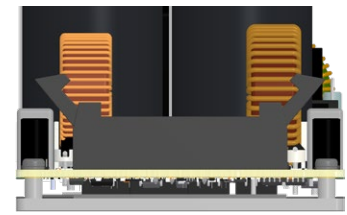
80 mm

55 mm

L-A2



100 mm



80 mm

46.3 mm

Power Ratings (1% THD @ 120V_{AC} and 230V_{AC})

| | | 100 V | 8 Ω | 4 Ω | 2.7 Ω |
|---------|------------------------|--------|--------|---------|--------|
| L-PRO2S | Output power channel 1 | 200 W | 400 W | 800 W | 1200 W |
| | Output power channel 2 | 200 W | 400 W | 800 W | 1200 W |
| | Output power BTL mode | 1500 W | 1500 W | 2500 W* | N/A |
| L-A2 | Output power channel 1 | 200 W | 400 W | 800 W | 1200 W |
| | Output power channel 2 | 200 W | 400 W | 800 W | 1200 W |
| | Output power BTL mode | 1500 W | 1500 W | 2500 W* | N/A |

* Dynamic headroom power

| | |
|---------------------------------------|--|
| Output Circuitry | UMAC™ Class D - full bandwidth PWM modulator with ultra low distortion |
| Output Voltage | 85 V _p / 170 V _{pp} (unloaded) / Bridged 170 V _p / 340 V _{pp} (unloaded) |
| Amplifier Gain | 28.2 dB / 34.2 dB bridge mode |
| Signal To Noise-Ratio | > 119 dB (A-weighted, 20 Hz - 20 kHz, 8 Ω load) |
| THD+N (typical) | < 0.05 % (20 Hz - 20 kHz, 8 Ω load, 3 dB below rated power) |
| Frequency Response | 20 Hz - 20 kHz (+0/-0.25 dB (8 Ω load, 3 dB below rated power) |
| Damping Factor | L-PRO2S: > 350, each channel (8 Ω load, 1 kHz and below) |
| Protection Circuits | Short circuit protection, DC protection, under voltage protection, temperature protection, overload protection |
| Readouts & Control options | Protect/Disable (mute), Temperature, Clip, Voltage, Auto Standby/Wake-up (3 timings) |
| Power Supply | UREC™ universal mains switch mode power supply with Power Factor Correction (PFC) and integral standby converter |
| Operation Voltage | Universal Mains, 85-265V |
| SMPS RMS Power Limit | L-PRO2S: 1500 W (230V _{AC} / 120V _{AC}) 1300W (100V _{AC}) / L-A2: None |
| Aux. Power for DSP | ±15 V, +7.5 V, maximum total 8.3 watt available (L-PRO2S only) |
| Standby Consumption | < 0.25 W (Green Energy Star & ErP 1275/2008/EC compliant) |
| Dimensions | L-PRO2S: 55 x 80 x 215 mm / L-A2: 51 x 80 x 100 mm |
| Weight | L-PRO2S: 970 g (2.14 lbs) / L-A2: 330 g (0.73 lbs) |

All specifications are typical values