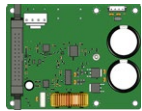
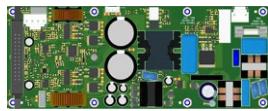


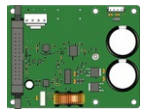
# U-Series Amplifier Module



**U-A1**  
280 W RMS  
1000 W Peak



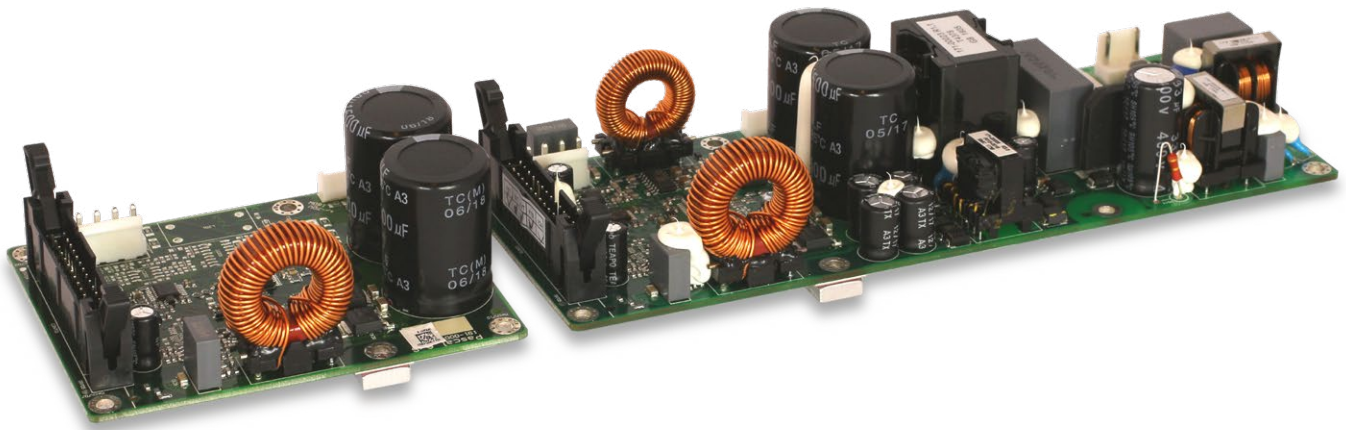
**U-PRO2**  
280 + 140 W RMS  
1000 + 300 W Peak



**U-A1D**  
140 W RMS  
300 W Peak



**U-PRO1**  
280 W RMS  
1000 W Peak

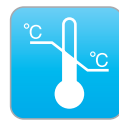


Pascal U-PRO & U-A1 Series – an ultra-compact power platform, for 1, 2 and 3-way applications, featuring extreme dynamic power ratings and integrated power supply with PFC (U-PRO only).



## Extreme Dynamic Power Ratings

The U-PRO & U-A1 series features unique dynamic power ratings, due to its extremely high voltage rails relative to its RMS power output. Resultantly, with LF channel RMS ratings of 280 W / 1000 W peak.



## Unmatched Efficiency

Like the L, S & T-PRO Series, the U-PRO Series boasts the world's best system efficiency, minimizing the requirement for heat sinks and cooling. The cool operation also contributes to the amplifiers' long term reliability.



## U-PRO2 Dedicated for Self-powered Speakers

The U-PRO2's asymmetrical power configuration, feature set and form factor uniquely optimize it as a dedicated power solution for self-powered sub, 2-way and 3-way loudspeakers.



## Auxiliary Power & Readouts

Auxiliary power is available for DSP or analog I/O cards. Readouts of protect/mute, temperature and clip signals are accessible for DSP/Network or IO-boards. The U-PRO Series features ultra low standby power consumption for EuP2013 and green energy star compliance, with an Auto Standby/Wake-up feature with selectable time settings.



## Audiophile Performance

Pascal's proprietary UMAC™ Class-D technology delivers unequalled audiophile specifications, including the highest dynamic range and the lowest distortion performance of any comparable pro audio amplifier. This makes the U-PRO series suitable for pro audio applications and for use in high-end Hi-Fi.



## Interface compatible with L/S/T-PRO2

The U-PRO Series features compatible pin interfacing and identical output voltages to the higher current capable, popular L-PRO, S-PRO and T-PRO modules; thus the front-end electronics of both the L-PRO, S-PRO, T-PRO and U-PRO Series are plug-and-play compatible.



## Universal Mains & PFC

Pascal's UREC™ PFC (Power Factor Correction) power supply technology enables universal AC mains operation, eliminating the need for local market specific power regulation products and susceptibility to related reliability issues. The power supply delivers consistent, regulated power worldwide.



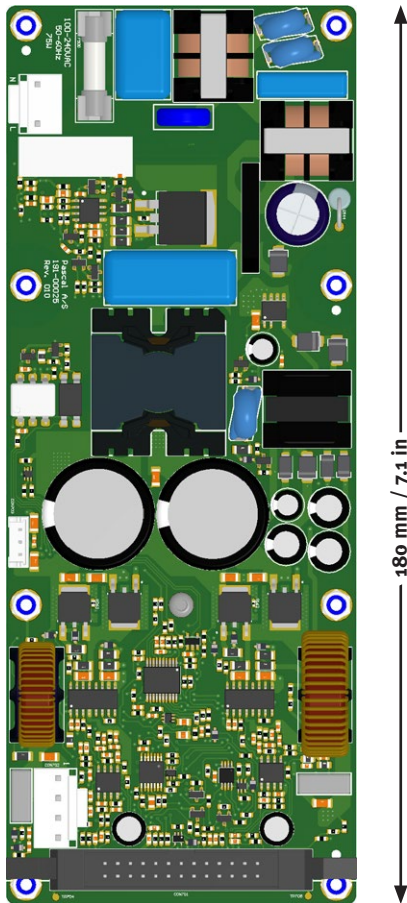
## Safety Approved - EMC Compliant

Pascal amplifier modules are safety approved and verified for EMC compliance. CB report and UL certificates are available for easy market approval.

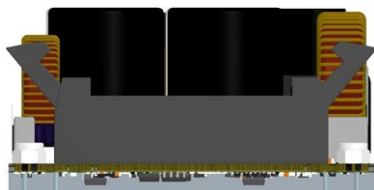
# Specifications:

## U-PRO2

(U-PRO1 has same dimensions as U-PRO2)



180 mm / 7.1 in

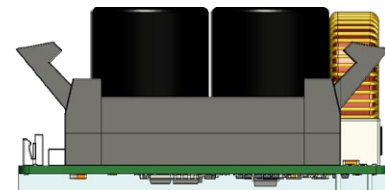
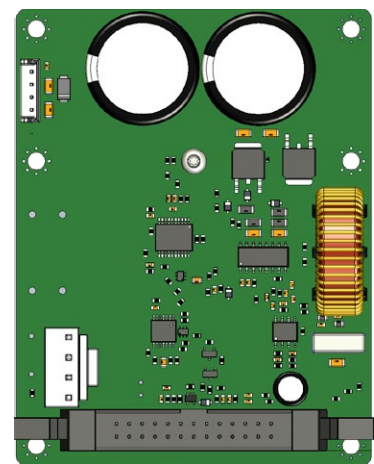


38 mm / 1.5 in

70 mm / 2.8 in

## U-A1

(U-A1D has same dimensions as U-A1)



37 mm / 1.5 in

70 mm / 2.8 in

### Power Ratings (RMS @ 1% THD @ 230Vac)

	Ch1	Ch2	Ch3	Peak @ 4 Ω
U-PRO1	280 W	N/A	N/A	1000 W
U-PRO2	280 W	140 W	N/A	1000 W + 300W
U-PRO2+U-A1	280 W	280 W	140 W	1000 W + 1000 W + 300W
U-PRO2+U-A1D	280 W	140 W	140 W	1000 W + 300 W + 300W

<b>Output Circuitry</b>	UMACTM Class D - full bandwidth PWM modulator with ultra low distortion
<b>Output Voltage</b>	70 V <sub>p</sub> / 140 V <sub>pp</sub> (unloaded)
<b>Amplifier Gain</b>	26 dB
<b>Signal To Noise-Ratio</b>	> 119 dB (A-weighted, 20 Hz - 20 kHz, 8 Ω load)
<b>THD+N (typical)</b>	< 0.05 % (20 Hz - 20 kHz, 8 Ω load, 3 dB below rated power)
<b>Frequency Response</b>	20 Hz - 20 kHz (+0/-0.25 dB (8 Ω load, 3 dB below rated power)
<b>Damping Factor</b>	> 350, channel 1 / > 225, channel 2 (8 Ω load, 1 kHz and below)
<b>Protection Circuits</b>	Short circuit protection, DC protection, under voltage protection, temperature protection, overload protection
<b>Readouts &amp; Control options</b>	Protect/Disable (mute), Temperature, Clip, Voltage, Auto Standby/Wake-up (3 timings)
<b>Power Supply*</b>	URECTM universal mains switch mode power supply with Power Factor Correction (PFC) and integral standby converter
<b>Operation Voltage</b>	Universal Mains, 85-265V
<b>Aux. Power for DSP</b>	±15 V, +7.5 V, maximum total 9 watt available (U-PRO2 only)
<b>Standby Consumption</b>	< 0.25 W (Green Energy Star & ErP 1275/2008/EC compliant)
<b>Dimensions</b>	U-PRO1/U-PRO2: 38 x 70 x 180 mm (1.5 x 2.8 x 7.0 in), U-A1/U-A1D: 37 x 70 x 90 mm (1.45 x 2.8 x 3.5 in)
<b>Weight</b>	U-PRO1: 220g (0.49 lbs) / U-PRO2: 229g (0.50 lbs) / U-A1: 90g (0.20 lbs) / U-A1D: 82g (0.18 lbs)

All specifications are typical values  
\* U-PRO1 & U-PRO2 only