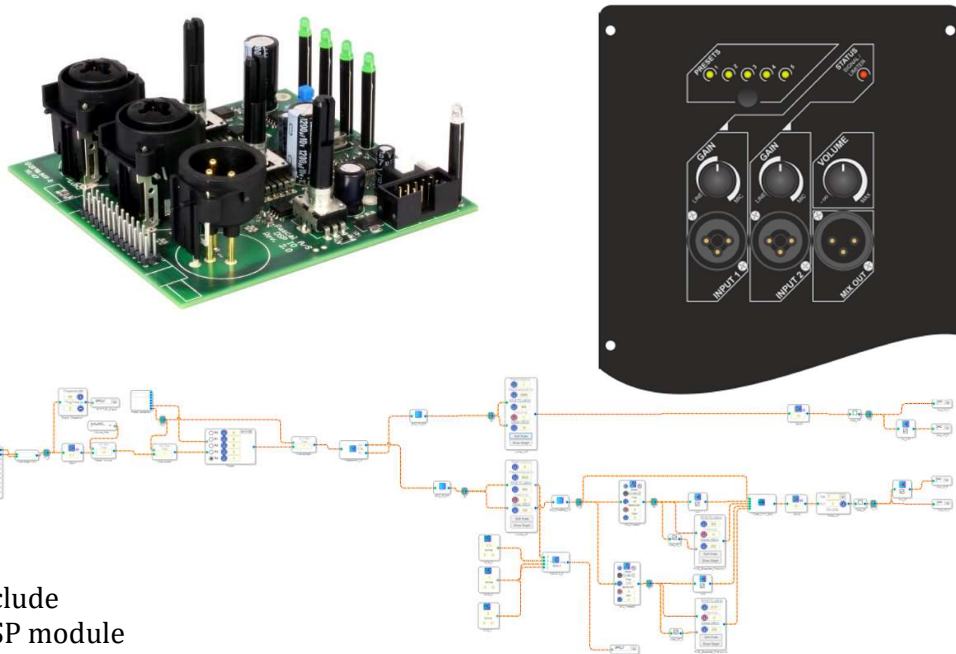


DSP-A Series

DSP module optimized for 2-way full range and subwoofer speaker applications



DSP-A include

- DSP module
- 26pin ribbon cable with header to connect to any U-T-S-L series module
- SigmaStudio template for 2-way and subwoofer applications
- Three knobs

The Pascal DSP-A module is based on Analog Devices' 1701 DSP and compatible with any Pascal U-T-S-L series amplifier modules. The feature set include XLR combos that automatically selects between mic and line as well as 5 preset for easy speaker set up.

Specifications

Target applications	2-way full range and subwoofer speakers
Input connectors	2 x Neutrik XLR combo
Output connectors	1 x Neutrik XLR
Gain	One for each channel
Master volume	One master volume potentiometer
LEDs	5 x presets LEDs 1 x status LED
Preset selector	1 x push button
Max unclipped signal	+22dBu
Dynamic range	106dB
Sample rate	48kHz
DSP presets	5
Dimensions	
Weight	
Compatible Pascal amplifier module	U-T-S-L series modules
Software templates	2-way full range and subwoofer